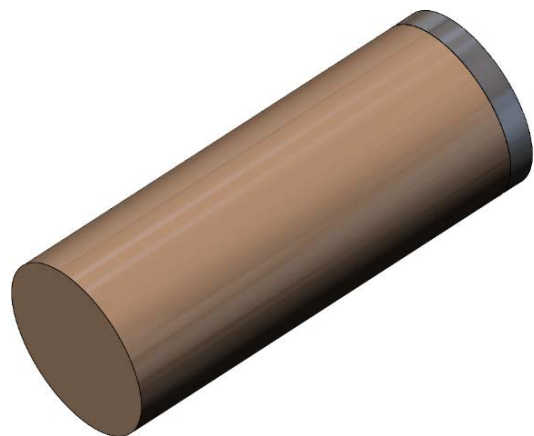


FOG INERTIAL MEASUREMENT UNIT

U123D



PROVISIONAL DATASHEET

GYROSCOPES PERFORMANCE

Input range	°/s	400	for info
Bias, RMS	°/h	3	Allan variance min
ARW	°/√h	0.05	white noise PSD
Magnetic response	°/h/Gauss	5	typical (non-shielded)

ACCELEROMETERS PERFORMANCE

Range	g	10
Bias stability	mg	0.2
Bandwidth	Hz	250

ELECTRICAL INTERFACE

Initialization	s	1	
Powering	W	1.5	+5V
Data rate	kHz	0.1-4	
Baud rate	kBd	115.2 – 1843.2	RS422, asynchronous

ENVIRONMENT

Operating temperature	°C	-40...+70	
Endurance temperature	°C	-55...+85	> 2 h, non-operating
Vibration, RMS	g	6	20 Hz... 2000 Hz
Shocks	g	350	1 ms half-sine

PHYSICAL PARAMETERS

Dimensions	mm	Ø40 x 100	ISO 2768-m
Weight	gram	200	estimated
Volume	cl (in ³)	12.5 (7.6)	
Frame resonance	kHz	> 1	
Housing		Al alloy	