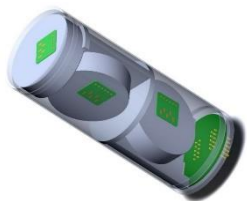


3X FIBER OPTIC GYROSCOPE

G181 / G181M



PROVISIONAL DATASHEET

PHYSICAL PARAMETERS

Dimensions	mm	Ø46 x 111	ISO 2768-m
Weight	gram	160 / 250	
Frame resonance	kHz	2	estimated
Housing		Al alloy / μ-metal	

PERFORMANCE

Input range	$^{\circ}/s$	300	for info
Bias, RMS	$^{\circ}/h$	1	Allan variance min
ARW	$^{\circ}/\sqrt{h}$	0.015	white noise PSD
Bandwidth	kHz	0.7	ADC input LPF filter
		0.15	for 115 kBd option
Magnetic response	$^{\circ}/h/Gauss$	3 / 0.1	typical

ELECTRICAL INTERFACE

Initialization	s	1	
Powering	W	2	+5V
Data rate	kHz	4.8	24-bit data
		0.6	for 115 kBd option
Baud rate	kBd	920	RS422, asynchronous
		115	option

ENVIRONMENT

Operating temperature	$^{\circ}C$	-40...+70	
Endurance temperature	$^{\circ}C$	-55...+85	> 2 h, non-operating
Vibration, RMS	g	6	20 Hz... 2000 Hz
Shocks	g	750	1 ms half-sine

RELIABILITY

MTBF / Lifetime	yr	5	humidity conditions applied
-----------------	----	---	-----------------------------